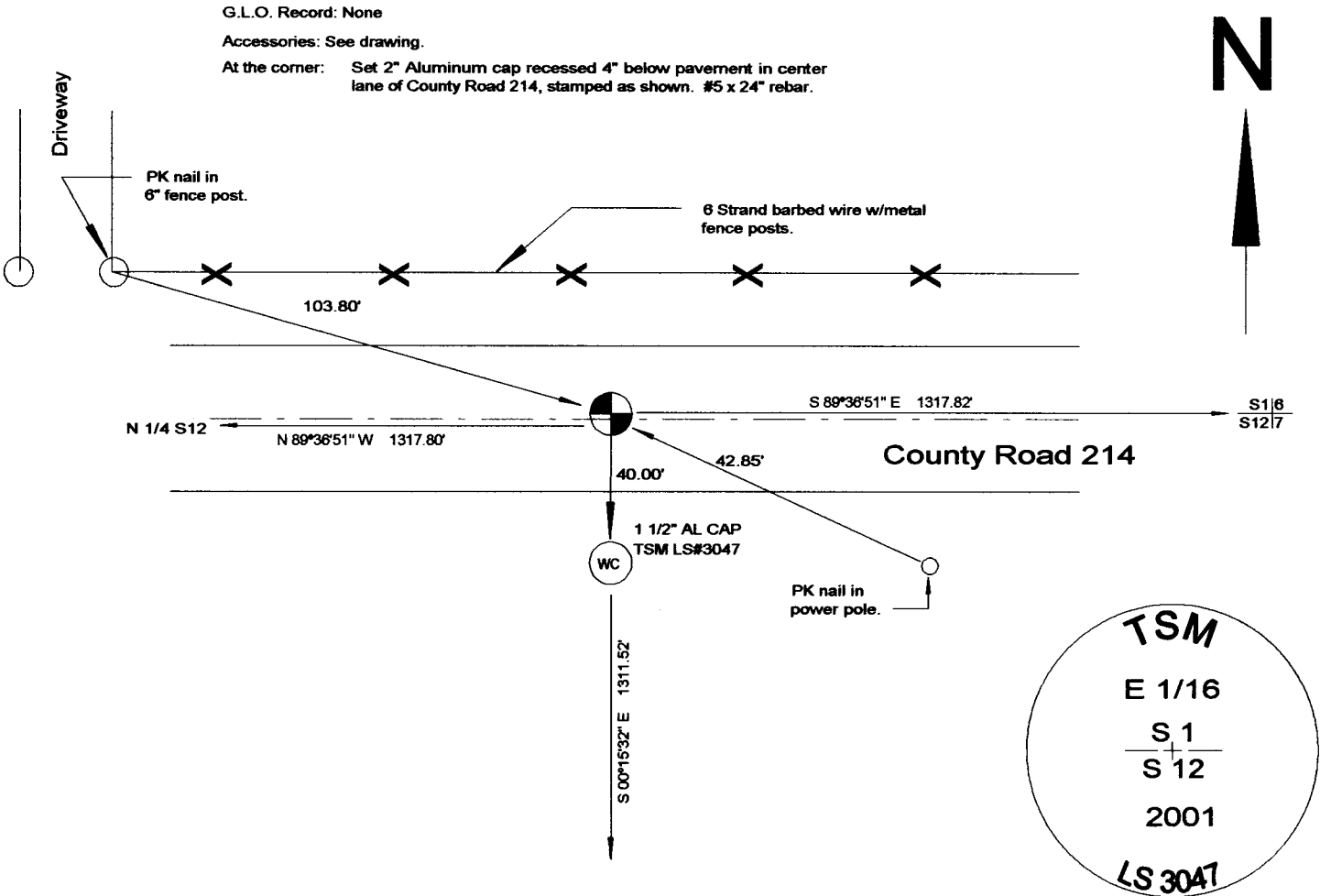


State of Wyoming Corner Record

(In compliance with the *CORNER PERPETUATION AND FILING ACT*, Wyoming Statutes, 1997, Section 33-29-140 et. seq., and the Rules and Regulations of the Board of Registration for Professional Engineers and Professional Land Surveyors)

Reverse side of this form may be used if more space is needed.

Record of original survey and citation of source of historical information (if corner is lost or obliterated). Description of corner monumentation evidence found and/or monument and accessories established to perpetuate the location of this corner. Sketch of relative location of monument, accessories, and reference points with course and distance to adjacent corner(s) (if determined in this survey). Method and rationale for reestablishment of lost or obliterated corner.



RECORDED 8/01/2001 AT 3:36 PM REC# 300805 BK# 1603 PG# 873
 DEBRA K. LATHROP, CLERK OF LARAMIE COUNTY, WY PAGE 1 OF 1

Date of Field Work: 03-09-2001 Office Reference: T14NR64W-660600

CROSS INDEX DIAGRAM

1	2	3	4	5	6	7	8	9	10	11	12	13	14	15	16	17	18	19	20	21	22	23	24	25	
A																									A
B																									B
C	6																								C
D		5																							D
E			4																						E
F				3																					F
G					2																				G
H						1																			H
I																									I
J																									J
K																									K
L																									L
M	7																								M
N		8																							N
O			9																						O
P				10																					P
Q					11																				Q
R						12																			R
S							13																		S
T								14																	T
U									15																U
V										16															V
W											17														W
X												18													X
Y													19												Y
Z														20											Z
	1	2	3	4	5	6	7	8	9	10	11	12	13	14	15	16	17	18	19	20	21	22	23	24	

Firm/Agency, Address

Larry, T. Perry, LS#3047
 1127 Terry Ranch Road
 Cheyenne, Wyoming 82007

This corner record was prepared by me or under my direction and supervision.

SEAL & SIGNATURE

Telephone Number: 634-9360

"Your Friendly Neighborhood Surveyor"

Larry T. Perry LS

30 July 2001

Corner Name: E 1/16

Section: 12 T 14 R 64 : 6th P.M. Cross-Index No.: E-24